

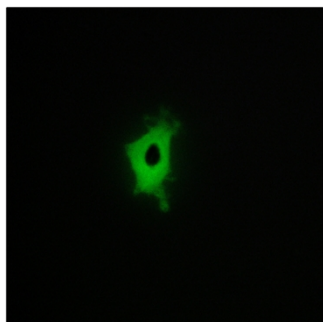


Galectin-2 Polyclonal Antibody

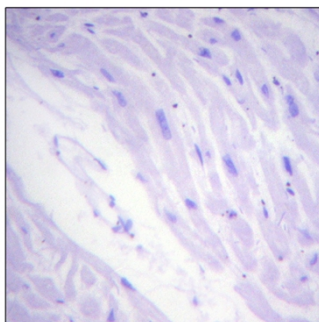
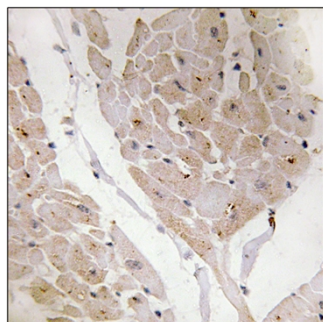
Catalog No	YP-Ab-00404
Isotype	IgG
Reactivity	Human;Mouse;Rat
Applications	IHC;IF;ELISA
Gene Name	LGALS2
Protein Name	Galectin-2
Immunogen	The antiserum was produced against synthesized peptide derived from human LEG2. AA range:31-80
Specificity	Galectin-2 Polyclonal Antibody detects endogenous levels of Galectin-2 protein.
Formulation	Liquid in PBS containing 50% glycerol, 0.5% BSA and 0.02% sodium azide.
Source	Polyclonal, Rabbit,IgG
Purification	The antibody was affinity-purified from rabbit antiserum by affinity-chromatography using epitope-specific immunogen.
Dilution	Immunohistochemistry: 1/100 - 1/300. Immunofluorescence: 1/200 - 1/1000. ELISA: 1/5000. Not yet tested in other applications.
Concentration	1 mg/ml
Purity	≥90%
Storage Stability	-20°C/1 year
Synonyms	LGALS2; Galectin-2; Gal-2; Beta-galactoside-binding lectin L-14-II; HL14; Lactose-binding lectin 2; S-Lac lectin 2
Observed Band	
Cell Pathway	
Tissue Specificity	Colon,
Function	function:This protein binds beta-galactoside. Its physiological function is not yet known.,online information:Galectin-2,similarity:Contains 1 galectin domain.,subunit:Homodimer.,
Background	The protein encoded by this gene is a soluble beta-galactoside binding lectin. The encoded protein is found as a homodimer and can bind to lymphotoxin-alpha. A single nucleotide polymorphism in an intron of this gene can alter the transcriptional level of the protein, with a resultant increased risk of myocardial infarction. [provided by RefSeq, Jul 2008],
matters needing attention	Avoid repeated freezing and thawing!

**Usage suggestions**

This product can be used in immunological reaction related experiments. For more information, please consult technical personnel.

Products Images

Immunofluorescence analysis of COS7 cells, using LEG2 Antibody. The picture on the right is blocked with the synthesized peptide.



Immunohistochemistry analysis of paraffin-embedded human heart tissue, using LEG2 Antibody. The picture on the right is blocked with the synthesized peptide.